

PHB-113/213 Long Jaws HYDRAULIC PULLER

Page 1 of 3

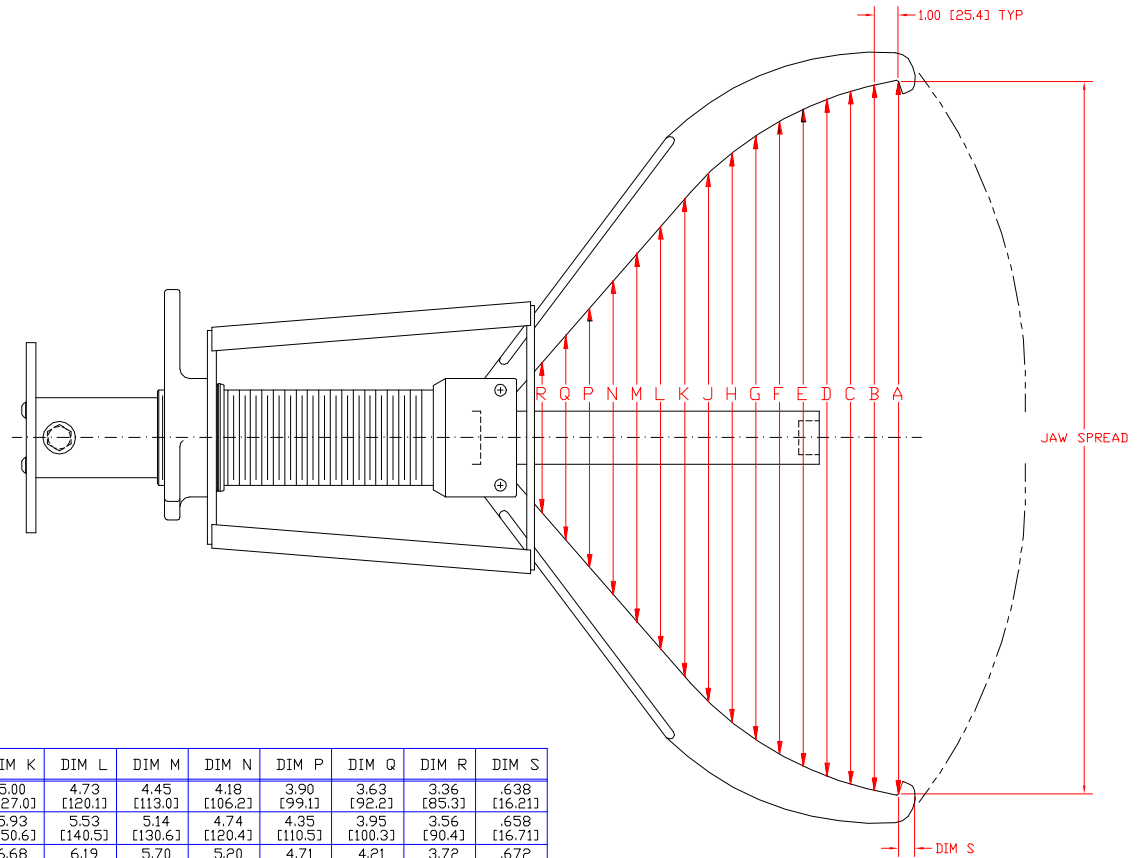
POSI LOCK MODELS
PHB113/PHB213 LONG JAWS
GEAR AND BEARING PULLER

MODEL PHB113

25 TON [22.8 METRIC TONS]
3 LONG JAWS
RAM STROKE 14.25 [362.0]
REACH 20.0 [508.0]
SPREAD 1.5 [38.1] TO 30.0 [762.0]
WT. 134 Lbs.[60.8 kg]
RATED FOR 10000 PSI

MODEL PHB213

25 TON [22.8 METRIC TONS]
2 LONG JAWS
RAM STROKE 14.25 [362.0]
REACH 20.0 [508.0]
SPREAD 1.5 [38.1] TO 30.0 [762.0]
WT. 110 Lbs.[49.9 kg]
RATED FOR 10000 PSI

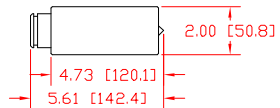
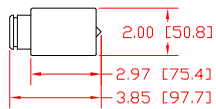
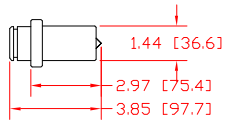
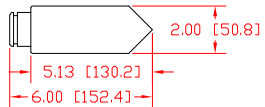
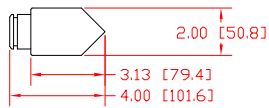
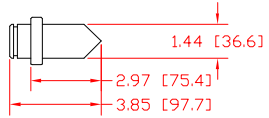


JAW SPREAD	DIM A	DIM B	DIM C	DIM D	DIM E	DIM F	DIM G	DIM H	DIM J	DIM K	DIM L	DIM M	DIM N	DIM P	DIM Q	DIM R	DIM S
1.50 [38.1]	5.36 [136.1]	5.78 [146.8]	6.06 [153.9]	6.20 [157.5]	6.21 [157.7]	6.08 [154.4]	5.82 [147.8]	5.55 [141.0]	5.27 [133.9]	5.00 [127.0]	4.73 [120.1]	4.45 [113.0]	4.18 [106.2]	3.90 [99.1]	3.63 [92.2]	3.36 [85.3]	.638 [16.21]
4.00 [101.6]	7.31 [185.7]	7.62 [193.5]	7.79 [197.9]	7.82 [198.6]	7.72 [196.1]	7.49 [190.2]	7.11 [180.6]	6.72 [170.7]	6.32 [160.5]	5.93 [150.6]	5.53 [140.5]	5.14 [130.6]	4.74 [120.4]	4.35 [110.5]	3.95 [100.3]	3.56 [90.4]	.658 [16.71]
6.00 [152.4]	8.86 [225.0]	9.08 [230.6]	9.17 [232.9]	9.13 [231.9]	8.94 [227.1]	8.63 [219.2]	8.17 [207.5]	7.67 [194.8]	7.18 [182.4]	6.68 [169.7]	6.19 [157.2]	5.70 [144.8]	5.20 [132.1]	4.71 [119.6]	4.21 [106.9]	3.72 [94.5]	.672 [17.07]
8.00 [203.2]	10.41 [264.4]	10.56 [268.2]	10.57 [268.5]	10.45 [265.4]	10.19 [258.8]	9.79 [248.7]	9.24 [234.7]	8.65 [219.7]	8.05 [204.5]	7.46 [189.5]	6.86 [174.2]	6.27 [159.3]	5.67 [144.0]	5.07 [128.8]	4.48 [113.8]	3.88 [98.6]	.685 [17.40]
10.0 [254.0]	11.98 [304.3]	12.05 [306.1]	11.99 [304.5]	11.79 [299.5]	11.46 [291.1]	10.99 [279.1]	10.35 [262.9]	9.65 [245.1]	8.95 [227.3]	8.25 [209.6]	7.55 [191.8]	6.85 [174.0]	6.15 [156.2]	5.45 [138.4]	4.75 [120.7]	4.05 [102.9]	.696 [17.68]
12.0 [304.8]	13.56 [344.4]	13.56 [344.4]	13.43 [341.1]	13.17 [334.5]	12.76 [324.1]	12.22 [310.4]	11.51 [292.4]	10.70 [271.8]	9.89 [251.2]	9.08 [230.6]	8.27 [210.1]	7.46 [189.5]	6.65 [168.9]	5.84 [148.3]	5.03 [127.8]	4.22 [107.2]	.706 [17.93]
14.0 [355.6]	15.16 [385.1]	15.10 [383.5]	14.91 [378.7]	14.58 [370.3]	14.11 [358.4]	13.49 [342.6]	12.71 [322.8]	11.79 [299.5]	10.87 [276.1]	9.94 [252.5]	9.02 [229.1]	8.09 [205.5]	7.17 [182.1]	6.24 [158.5]	5.32 [135.1]	4.40 [111.8]	.714 [18.14]
16.0 [406.4]	16.81 [427.0]	16.69 [423.9]	16.44 [417.6]	16.05 [407.7]	15.51 [394.0]	14.82 [376.4]	13.97 [354.8]	12.95 [328.9]	11.90 [302.3]	10.85 [275.6]	9.81 [249.2]	8.76 [222.5]	7.72 [196.1]	6.67 [169.4]	5.62 [142.7]	4.58 [116.3]	.720 [18.29]
18.0 [457.2]	18.49 [469.6]	18.32 [465.3]	18.01 [457.5]	17.56 [446.0]	16.97 [431.0]	16.22 [412.0]	15.29 [388.4]	14.17 [359.9]	13.00 [330.2]	11.82 [300.2]	10.65 [270.5]	9.47 [240.5]	8.30 [210.8]	7.12 [180.8]	5.95 [151.1]	4.77 [121.2]	.725 [18.42]
20.0 [508.0]	20.23 [513.8]	20.01 [508.3]	19.65 [499.1]	19.15 [486.4]	18.50 [469.9]	17.68 [449.1]	16.69 [423.9]	15.50 [393.7]	14.18 [360.2]	12.87 [326.9]	11.55 [293.4]	10.24 [260.1]	8.92 [226.6]	7.61 [193.3]	6.29 [159.8]	4.97 [126.2]	.728 [18.49]
22.0 [558.8]	22.04 [559.8]	21.77 [553.0]	21.36 [542.5]	20.81 [528.6]	20.11 [510.8]	19.24 [488.7]	18.19 [462.0]	16.93 [430.0]	15.47 [392.9]	14.00 [355.6]	12.54 [318.5]	11.07 [281.2]	9.60 [243.8]	8.13 [206.5]	6.66 [169.2]	5.19 [131.8]	.730 [18.54]
24.0 [609.6]	23.91 [607.3]	23.61 [599.7]	23.16 [588.3]	22.57 [573.3]	21.82 [554.2]	20.90 [530.9]	19.79 [502.7]	18.47 [469.1]	16.89 [429.0]	15.26 [387.6]	13.62 [345.9]	11.98 [304.3]	10.34 [262.6]	8.71 [221.2]	7.07 [179.6]	5.43 [137.9]	.729 [18.52]
26.0 [660.4]	25.88 [657.4]	25.54 [648.7]	25.06 [636.5]	24.43 [620.5]	23.64 [600.5]	22.67 [575.8]	21.52 [546.6]	20.14 [511.6]	18.49 [469.6]	16.66 [423.2]	14.83 [376.7]	13.01 [330.5]	11.18 [284.0]	9.35 [237.5]	7.52 [191.0]	5.70 [144.8]	.726 [18.44]
28.0 [711.2]	27.94 [709.7]	27.57 [700.3]	27.06 [687.3]	26.40 [670.6]	25.58 [649.7]	24.59 [624.6]	23.39 [594.1]	21.96 [557.8]	20.27 [514.9]	18.26 [463.8]	16.22 [412.0]	14.17 [359.9]	12.13 [308.1]	10.08 [256.0]	8.04 [204.2]	5.99 [152.1]	.721 [18.31]
30.0 [762.0]	29.74 [762.0]	29.21 [755.4]	28.53 [741.9]	28.53 [741.9]	27.68 [703.1]	26.66 [677.2]	25.43 [645.9]	23.98 [609.1]	22.24 [564.9]	20.13 [511.3]	17.83 [452.9]	15.53 [394.5]	13.23 [336.0]	10.93 [277.6]	8.63 [219.2]	6.34 [161.0]	.713 [18.11]

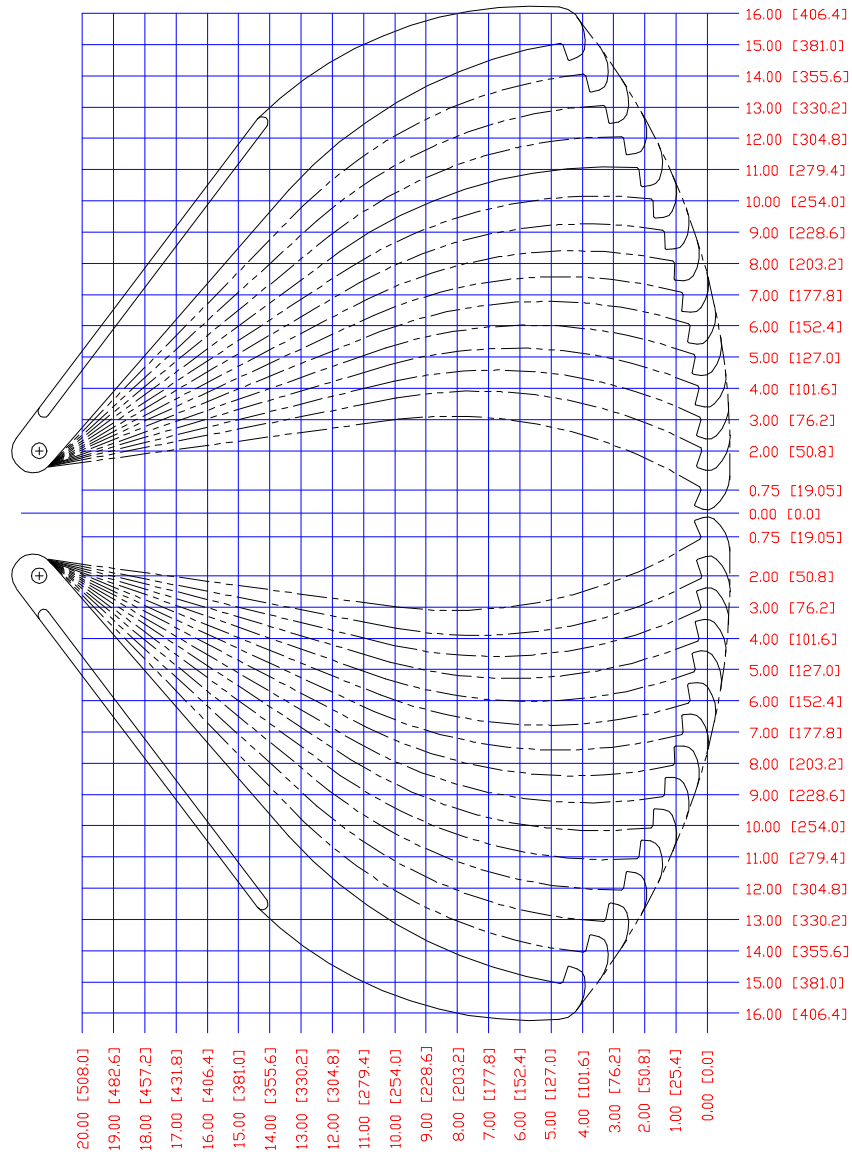
PHB-113/213 Long Jaws HYDRAULIC PULLER

Page 2 of 3

RAM POINT SET

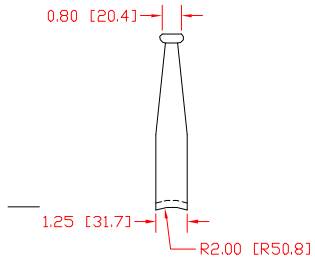


REFERENCE
GRID

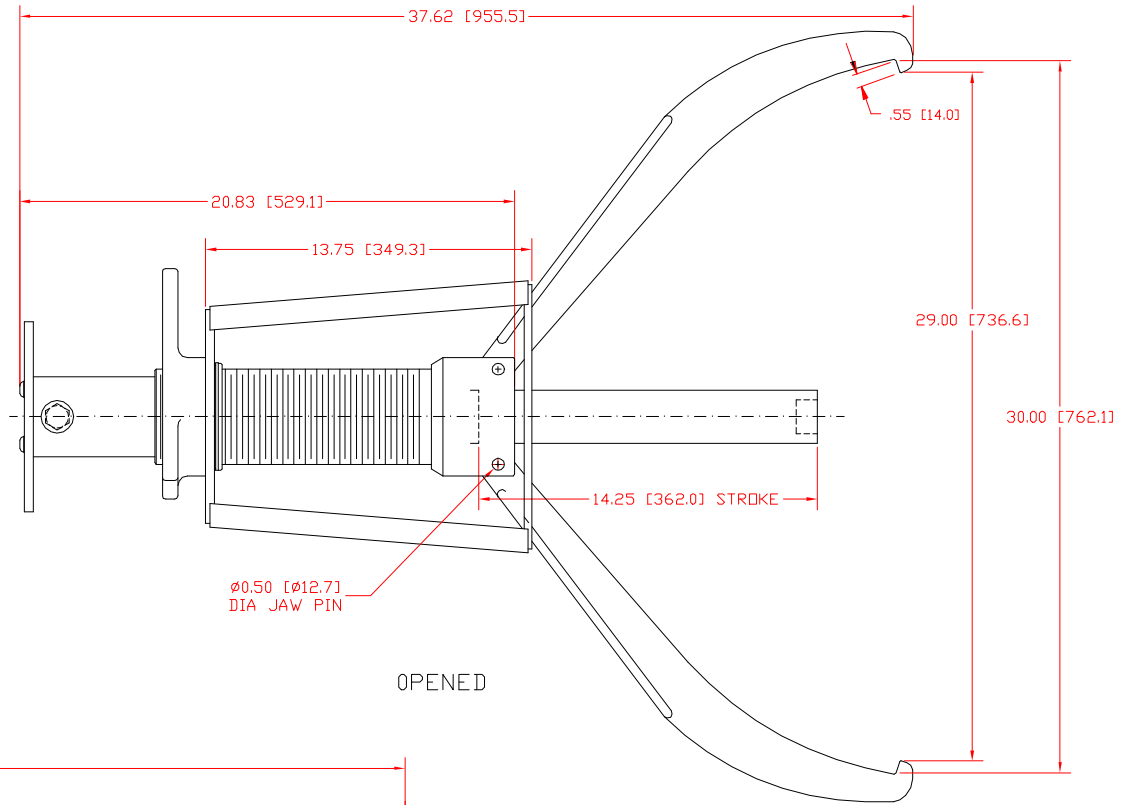


PHB-113/213 Long Jaws HYDRAULIC PULLER

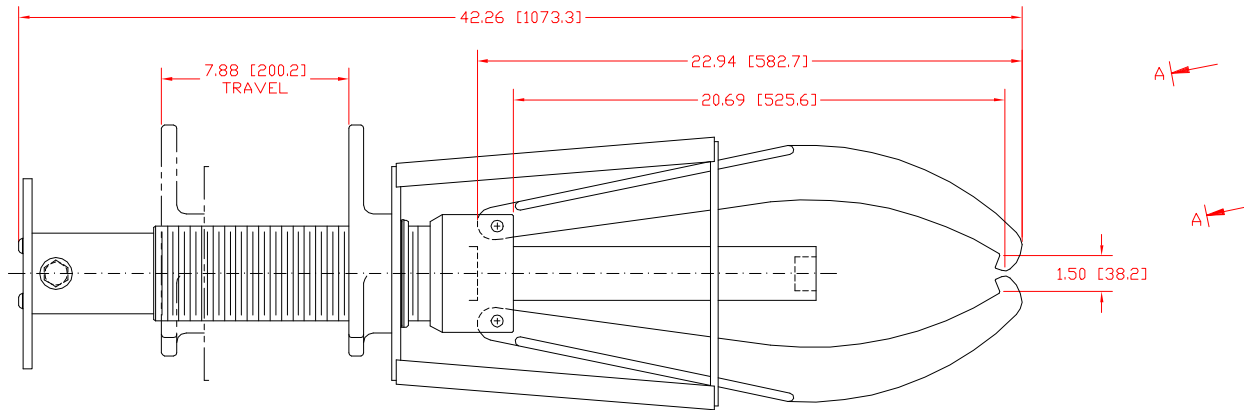
Page 3 of 3



VIEW A-A
JAW ONLY



OPENED



CLOSED