

PHB-116/216 Long Jaws HYDRAULIC PULLER

Page 1 of 3

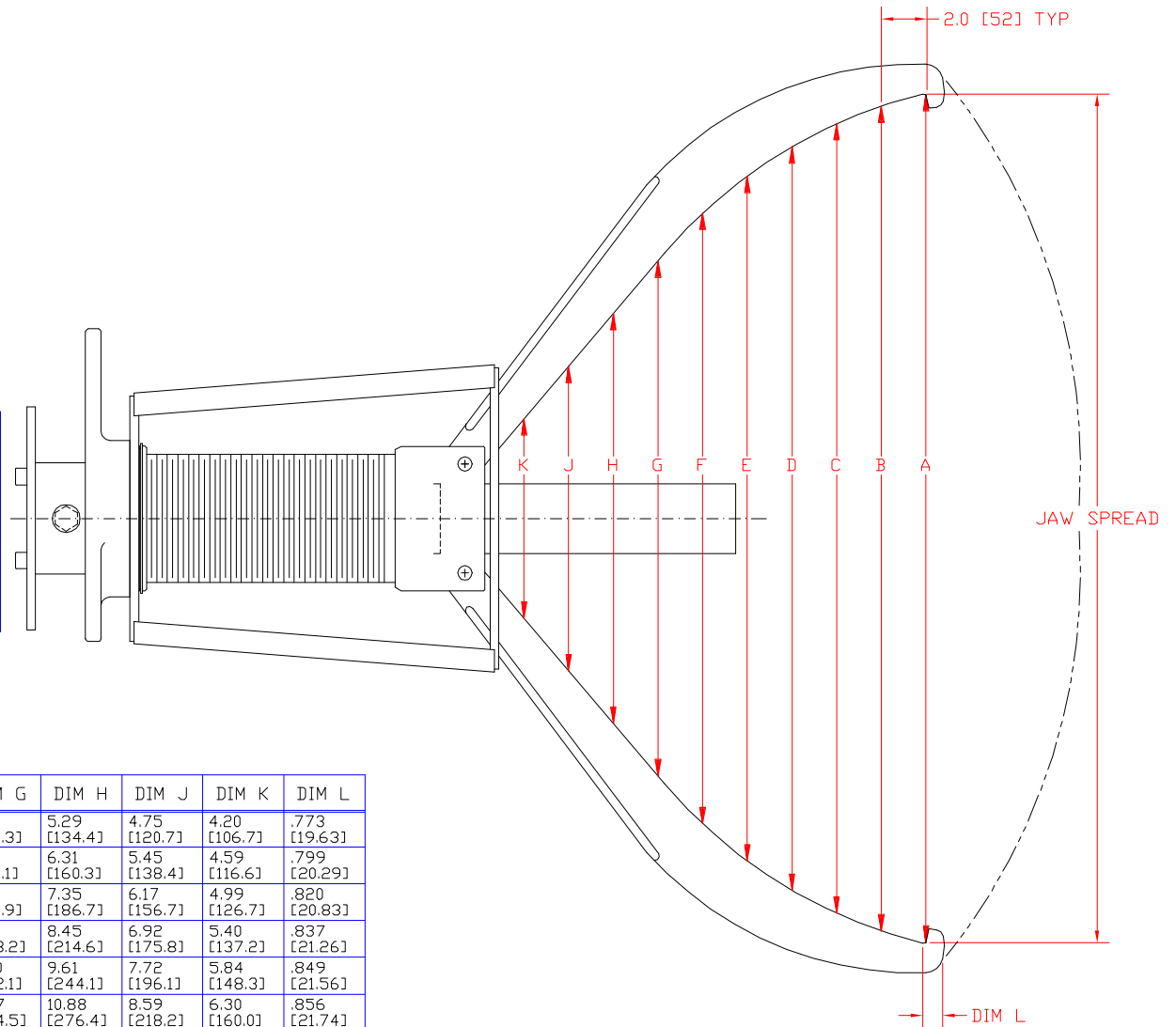
POSI LOCK MODELS
PHB116\PHB216 LONG JAWS
GEAR AND BEARING PULLER

MODEL PHB116

50 TON [45.6 METRIC TONS]
3 LONG JAWS
RAM STROKE 13.25 [336.6]
REACH 25.0 [635.0]
SPREAD 2.0 [50.8] TO 38.0 [965.2]
WT. 241 Lbs. [109.8 kg]
RATED FOR 10000 PSI

MODEL PHB216

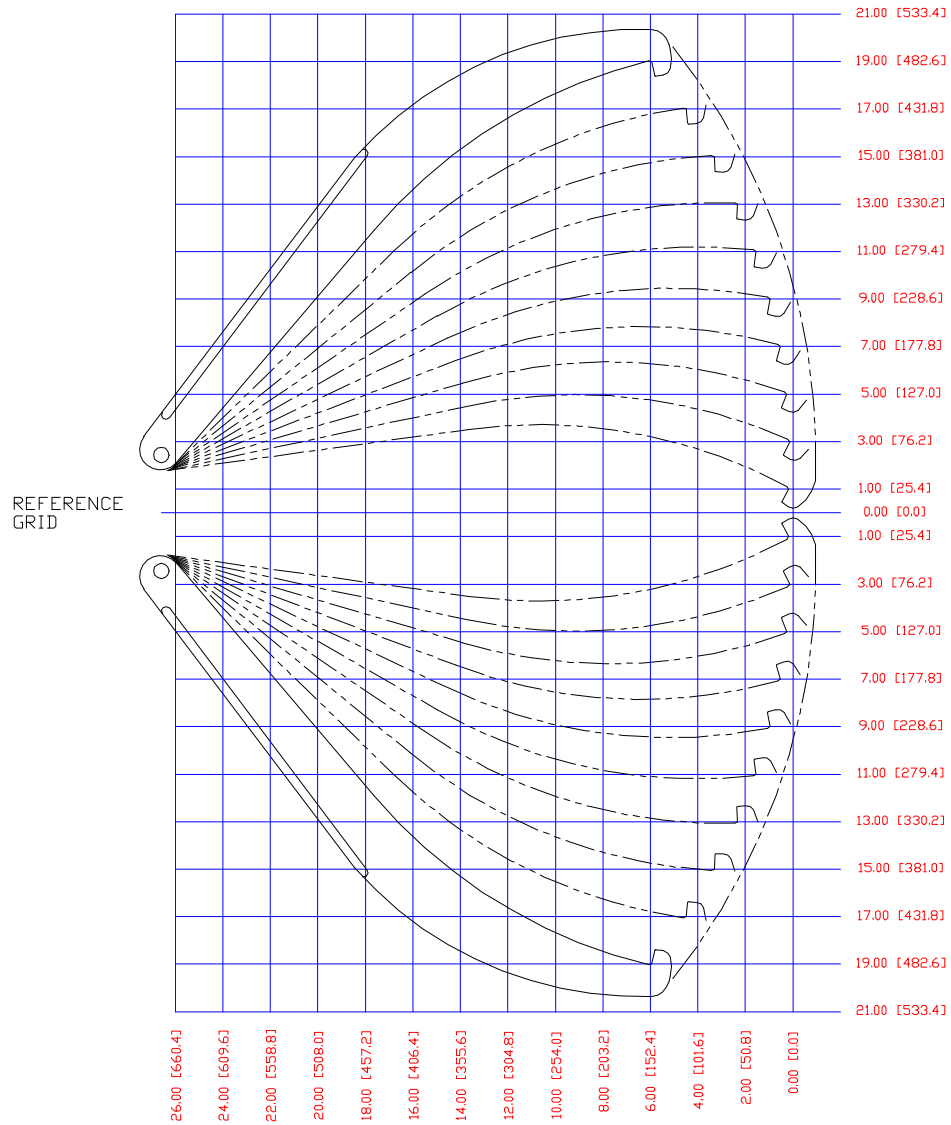
50 TON [45.6 METRIC TONS]
2 LONG JAWS
RAM STROKE 13.25 [336.6]
REACH 25.0 [635.0]
SPREAD 2.0 [50.8] TO 38.0 [965.2]
WT. 218 Lbs. 99.2 kg]
RATED FOR 10000 PSI



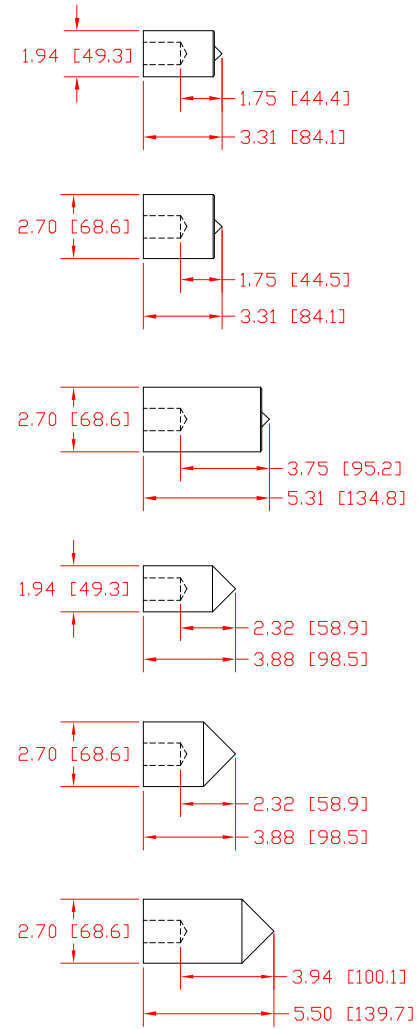
JAW SPREAD	DIM A	DIM B	DIM C	DIM D	DIM E	DIM F	DIM G	DIM H	DIM J	DIM K	DIM L
2.00 [50.8]	6.42 [163.1]	7.10 [180.3]	7.41 [188.2]	7.35 [186.7]	6.93 [176.0]	6.39 [162.3]	5.84 [148.3]	5.29 [134.4]	4.75 [120.7]	4.20 [106.7]	.773 [19.63]
6.00 [152.4]	9.50 [241.3]	9.90 [251.5]	9.93 [252.2]	9.59 [243.6]	8.89 [225.8]	8.03 [204.0]	7.17 [182.1]	6.31 [160.3]	5.45 [138.4]	4.59 [116.6]	.799 [20.29]
10.00 [254.0]	12.58 [319.5]	12.71 [322.8]	12.48 [317.0]	11.88 [301.8]	10.90 [276.9]	9.72 [246.9]	8.54 [216.9]	7.35 [186.7]	6.17 [156.7]	4.99 [126.7]	.820 [20.83]
14.00 [355.6]	15.69 [398.5]	15.59 [396.0]	15.12 [384.0]	14.26 [362.2]	13.01 [330.5]	11.49 [291.8]	9.97 [253.2]	8.45 [214.6]	6.92 [175.8]	5.40 [137.2]	.837 [21.26]
18.00 [457.2]	18.90 [480.1]	18.57 [471.7]	17.86 [453.6]	16.77 [426.0]	15.25 [387.4]	13.38 [339.9]	11.50 [292.1]	9.61 [244.1]	7.72 [196.1]	5.84 [148.3]	.849 [21.56]
22.00 [558.8]	22.23 [564.6]	21.70 [551.2]	20.78 [527.8]	19.45 [494.0]	17.68 [449.1]	15.46 [392.7]	13.17 [334.5]	10.88 [276.4]	8.59 [218.2]	6.30 [160.0]	.856 [21.74]
26.00 [660.4]	25.75 [654.1]	25.03 [635.8]	23.91 [607.3]	22.37 [568.2]	20.34 [516.6]	17.78 [451.6]	15.04 [382.0]	12.30 [312.4]	9.56 [242.8]	6.82 [173.2]	.858 [21.79]
30.00 [762.0]	29.52 [749.8]	28.63 [727.2]	27.33 [694.2]	25.58 [649.7]	23.33 [592.6]	20.47 [519.9]	17.20 [436.9]	13.94 [354.1]	10.67 [271.0]	7.40 [188.0]	.854 [21.69]
34.00 [863.6]	33.61 [853.7]	32.57 [827.3]	31.12 [790.4]	29.20 [741.7]	26.74 [679.2]	23.61 [599.7]	19.80 [502.9]	15.90 [403.9]	11.99 [304.5]	8.09 [205.5]	.843 [21.41]
38.00 [965.2]	38.00 [965.2]	36.97 [939.0]	35.39 [898.9]	33.32 [846.3]	30.69 [779.5]	27.35 [694.7]	23.07 [586.0]	18.36 [466.3]	13.66 [347.0]	8.95 [227.3]	.824 [20.93]

PHB-116/216 Long Jaws HYDRAULIC PULLER

Page 2 of 3

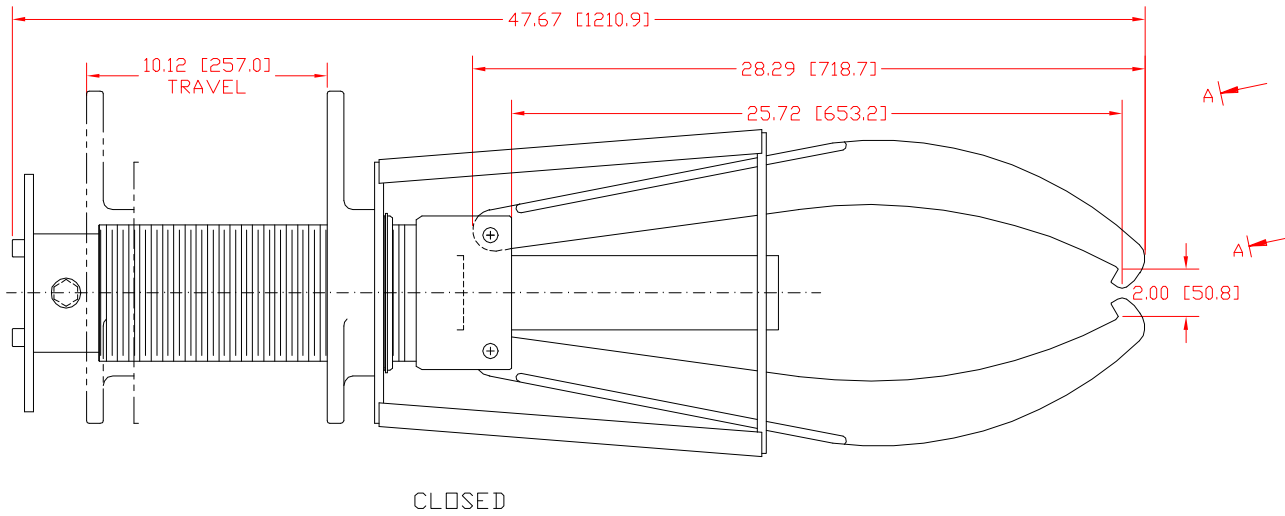
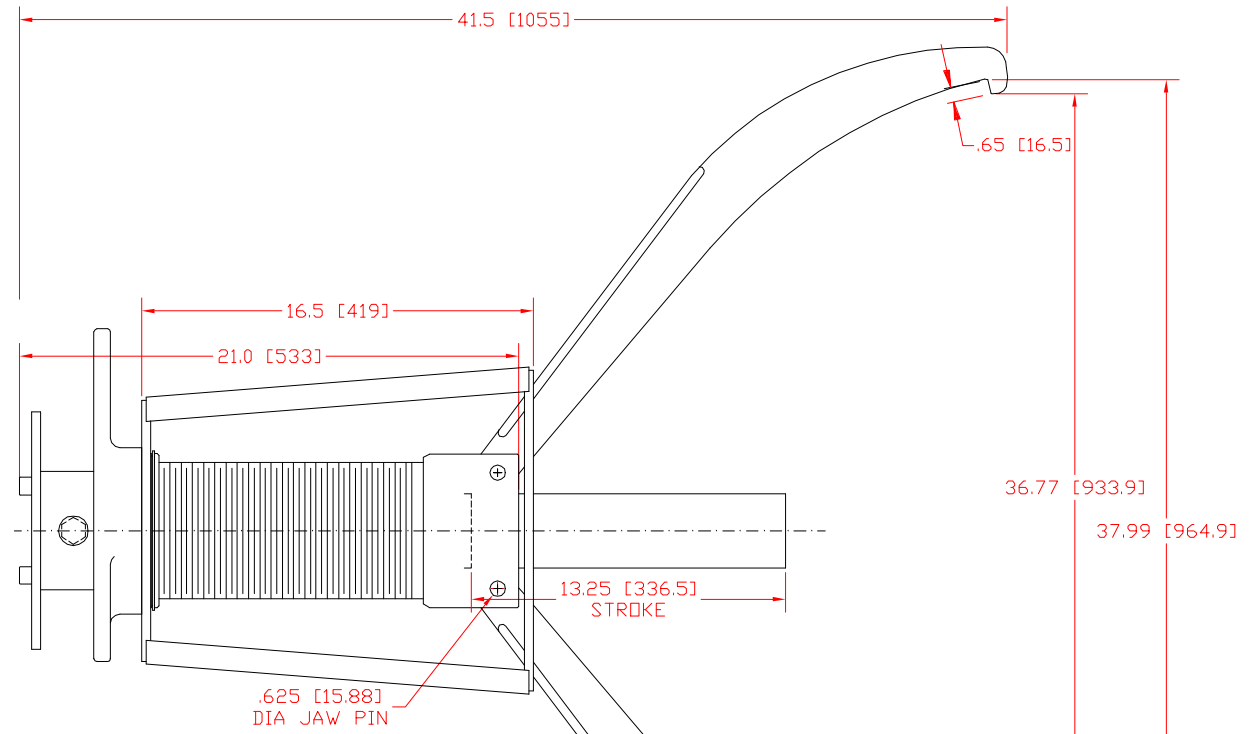
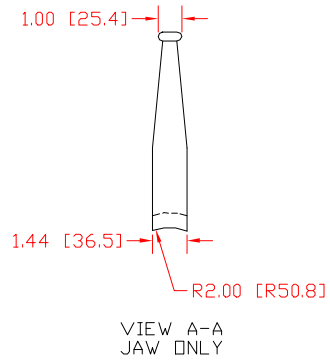


RAM POINT SET



PHB-116/216 Long Jaws HYDRAULIC PULLER

Page 3 of 3



OPENED

A

A