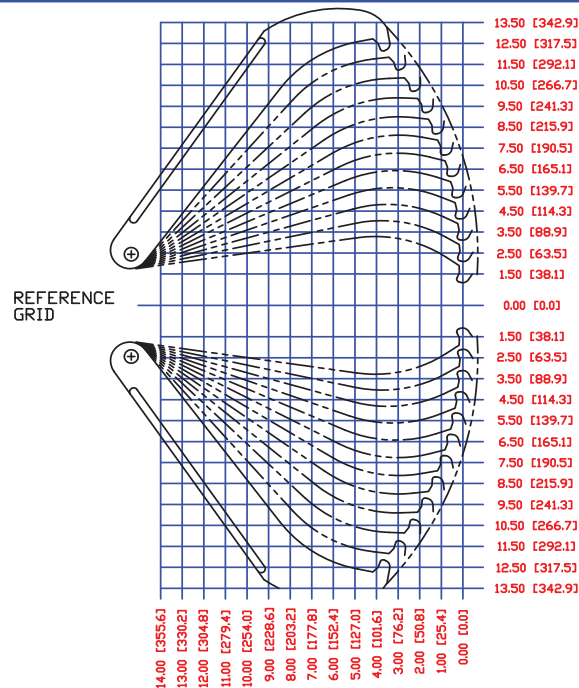
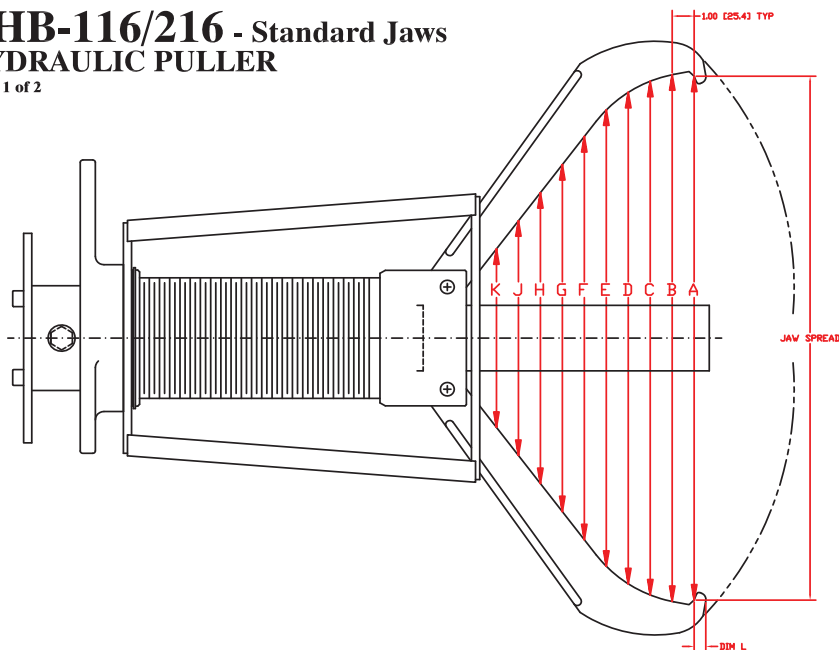


PHB-116/216 - Standard Jaws HYDRAULIC PULLER

Page 1 of 2



JAW SPREAD	DIM A	DIM B	DIM C	DIM D	DIM E	DIM F	DIM G	DIM H	DIM J	DIM K	DIM L
3.00 [76.2]	6.57 [166.9]	6.44 [163.6]	6.15 [156.2]	5.86 [148.8]	5.56 [141.2]	5.27 [133.9]	4.98 [126.5]	4.68 [118.9]	4.39 [111.5]	4.10 [104.1]	.598 [15.19]
5.00 [127.0]	8.08 [205.2]	7.84 [199.1]	7.41 [188.2]	6.98 [177.3]	6.55 [166.4]	6.12 [155.4]	5.68 [144.3]	5.25 [133.4]	4.82 [122.4]	4.39 [111.5]	.602 [15.29]
7.00 [177.8]	9.61 [244.1]	9.28 [235.7]	8.71 [221.2]	8.13 [206.5]	7.56 [192.0]	6.98 [177.3]	6.41 [162.8]	5.83 [148.1]	5.26 [133.6]	4.68 [118.9]	.603 [15.32]
9.00 [228.6]	11.16 [283.5]	10.75 [273.1]	10.05 [255.3]	9.32 [236.7]	8.60 [218.4]	7.88 [200.2]	7.15 [181.6]	6.43 [163.3]	5.71 [145.0]	4.99 [126.7]	.602 [15.29]
11.00 [279.4]	12.75 [323.9]	12.28 [311.9]	11.46 [291.1]	10.58 [268.7]	9.70 [246.4]	8.82 [224.0]	7.94 [201.7]	7.06 [179.3]	6.18 [157.0]	5.30 [134.6]	.598 [15.19]
13.00 [330.2]	14.39 [365.5]	13.88 [352.6]	12.97 [329.4]	11.92 [302.8]	10.87 [276.1]	9.82 [249.4]	8.77 [222.8]	7.72 [196.1]	6.67 [169.4]	5.62 [142.7]	.591 [15.01]
15.00 [381.0]	16.08 [408.4]	15.56 [395.2]	14.62 [371.3]	13.38 [339.9]	12.15 [308.6]	10.91 [277.1]	9.68 [245.9]	8.44 [214.4]	7.21 [183.1]	5.97 [151.6]	.581 [14.76]
17.00 [431.8]	17.85 [453.4]	17.33 [440.2]	16.39 [416.3]	15.01 [381.3]	13.57 [344.7]	12.12 [307.8]	10.68 [271.3]	9.24 [234.7]	7.80 [198.1]	6.36 [161.5]	.568 [14.43]
19.00 [482.6]	19.68 [499.9]	19.19 [487.4]	18.29 [464.6]	16.85 [428.0]	15.18 [385.6]	13.50 [342.9]	11.82 [300.2]	10.14 [257.6]	8.46 [214.9]	6.78 [172.2]	.552 [14.02]
21.00 [533.4]	21.58 [548.1]	21.15 [537.2]	20.32 [516.1]	18.97 [481.8]	17.06 [433.3]	15.10 [383.5]	13.15 [334.0]	11.19 [284.2]	9.23 [234.4]	7.28 [184.9]	.532 [13.51]
23.00 [584.2]	23.57 [598.7]	23.21 [589.5]	22.47 [570.7]	21.26 [540.0]	19.35 [491.5]	17.05 [433.1]	14.76 [374.9]	12.46 [316.5]	10.16 [258.1]	7.86 [199.6]	.507 [12.88]
25.00 [635.0]	25.00 [635.0]	25.13 [638.3]	24.51 [622.6]	23.45 [595.6]	21.78 [553.2]	19.24 [488.7]	16.56 [420.6]	13.88 [352.6]	11.20 [284.5]	8.51 [216.2]	.481 [12.22]

POST LOCK MODELS PHB116\PHB216 GEAR AND BEARING PULLER

MODEL PHB116
50 TON [45.6 METRIC TONS]
3 JAW - STANDARD
RAM STROKE 13.25 [336.6]
REACH 14.0 [355.6]
SPREAD 3.0 [76.2] TO 25.0 [635.0]
WT. 202 Lbs. [91 kg]
RATED FOR 10000 PSI

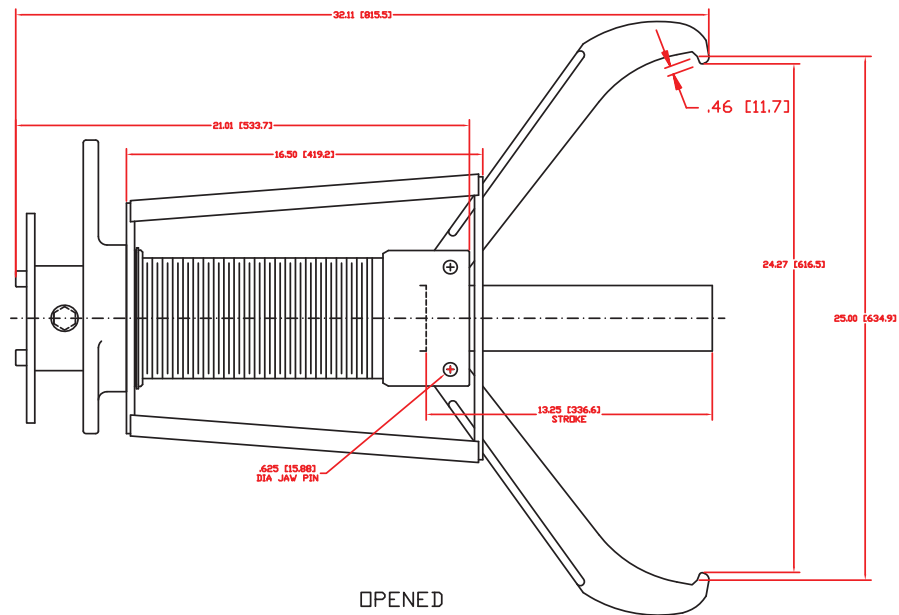
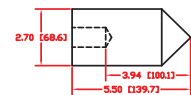
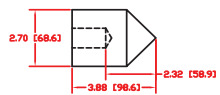
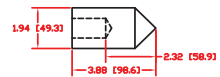
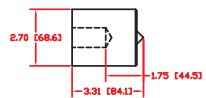
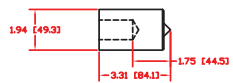
MODEL PHB216
50 TON [45.6 METRIC TONS]
2 JAW - STANDARD
RAM STROKE 13.25 [336.6]
REACH 14.0 [355.6]
SPREAD 3.0 [76.2] TO 25.0 [635.0]
WT. 192 Lbs. [87 kg]
RATED FOR 10000 PSI

ITEM NO.	QTY.	PART NO.	DESCRIPTION	NOTES
<input type="checkbox"/> PLAINNESS <input type="checkbox"/> STRAIGHTNESS <input type="checkbox"/> ANGULARITY <input type="checkbox"/> PERPENDICULARITY <input type="checkbox"/> PARALLELISM <input type="checkbox"/> ROUNDEDNESS <input type="checkbox"/> CIRCULARITY <input type="checkbox"/> PROFILE OF GROOVE <input type="checkbox"/> PROFILE OF LINE <input type="checkbox"/> SURFACE <input type="checkbox"/> THE POSITION <input type="checkbox"/> FILTERS SHALL BE 40				
MATERIAL: _____ DRAWN: AE/T/SB SCALE: _____ CHECKED: _____ DIMENSIONS ARE IN INCHES UNLESS OTHERWISE NOTED. DIMENSIONS ARE TO UNLESS OTHERWISE NOTED. ALL DIMENSIONS SHALL BE TO UNLESS OTHERWISE NOTED. ALL DIMENSIONS SHALL BE TO UNLESS OTHERWISE NOTED. CONFIDENTIAL - PROPERTY OF POST LOCK PULLER, INC. Box 256, Copper River, WA 98425				
PART NAME: _____ MODEL: PHB116/PHB216				REV: _____ SHEET 1 OF 2

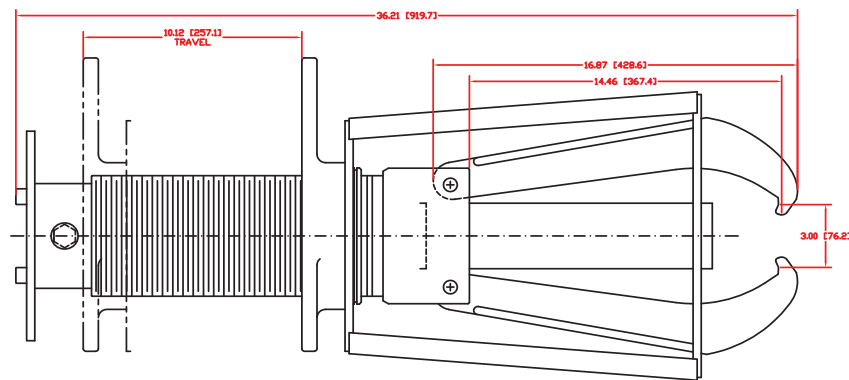
PHB-116/216 - Standard Jaws HYDRAULIC PULLER

Page 2 of 2

RAM POINT SET



OPENED



CLOSED



VIEW A-A
JAW ONLY

ITEM NO.	QTY.	PART NO.	DESCRIPTION	NOTES
		MATERIAL:	DRAWN: AE/T/SB	20MAY91
		SCALE:	CHECKED:	
<input type="checkbox"/> FLATNESS <input type="checkbox"/> STRAIGHTNESS <input type="checkbox"/> ANGULARITY <input type="checkbox"/> PERPENDICULARITY <input type="checkbox"/> PARALLELISM <input type="checkbox"/> ROUNDNESS <input type="checkbox"/> CIRCULARITY <input type="checkbox"/> PROFILE OF SURF. <input type="checkbox"/> FREE-STATE SURF. PROFILE <input type="checkbox"/> HOLE <input type="checkbox"/> CONCENTRICITY <input type="checkbox"/> SLOTTED <input type="checkbox"/> TAPER POSITION FEDERAL STD. 413				
DIMENSIONS ARE IN INCHES, DIMENSIONS AND UNITS IN 1/2 INCH IN MULTIPLES UNLESS OTHERWISE NOTED. ALL DIMENSIONS UNLESS OTHERWISE SPECIFIED ARE TO BE HONED TO THE CLOSEST TOLERANCE PERmissible.				
POST LOCK PULLER, INC. CONFIDENTIAL - PROPERTY OF POST LOCK PULLER, INC. Box 246, Cooperstown, NY 12523				
		PART NAME:	PART NO.	REV.
		MODEL:	001935	
		PHB116/PHB216	SHEET	2 OF 2

PHB-116/216 Long Jaws HYDRAULIC PULLER

Page 1 of 3

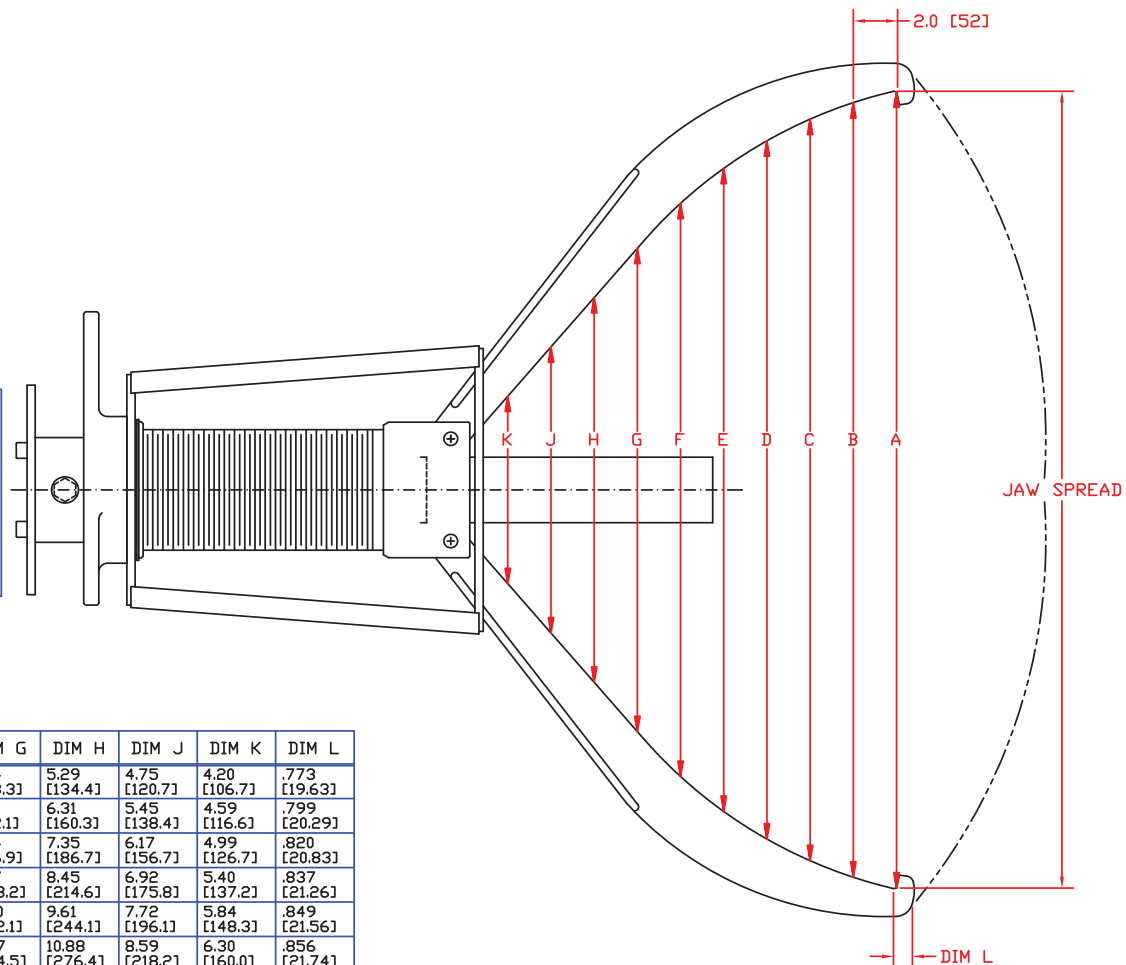
POSI LOCK MODELS
PHB116\PHB216 LONG JAWS
GEAR AND BEARING PULLER

MODEL PHB116

50 TON [45.6 METRIC TONS]
3 LONG JAWS
RAM STROKE 13.25 [336.6]
REACH 25.0 [635.0]
SPREAD 2.0 [50.8] TO 38.0 [965.2]
WT. 241 Lbs. [109.8 kg]
RATED FOR 10000 PSI

MODEL PHB216

50 TON [45.6 METRIC TONS]
2 LONG JAWS
RAM STROKE 13.25 [336.6]
REACH 25.0 [635.0]
SPREAD 2.0 [50.8] TO 38.0 [965.2]
WT. 218 Lbs. 99.2 kg]
RATED FOR 10000 PSI

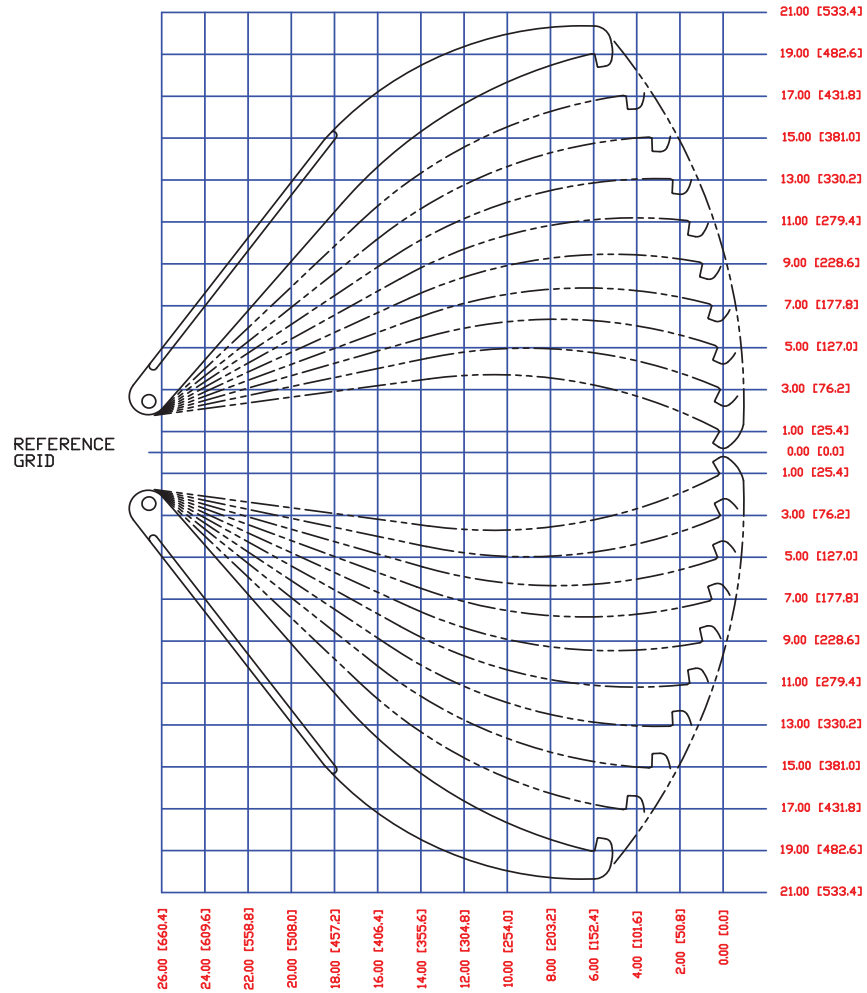


JAW SPREAD	DIM A	DIM B	DIM C	DIM D	DIM E	DIM F	DIM G	DIM H	DIM J	DIM K	DIM L
2.00 [50.8]	6.42 [163.1]	7.10 [180.3]	7.41 [188.2]	7.35 [186.7]	6.93 [176.0]	6.39 [162.3]	5.84 [148.3]	5.29 [134.4]	4.75 [120.7]	4.20 [106.7]	.773 [19.63]
6.00 [152.4]	9.50 [241.3]	9.90 [251.5]	9.93 [252.2]	9.59 [243.6]	8.89 [225.8]	8.03 [204.0]	7.17 [182.1]	6.31 [160.3]	5.45 [138.4]	4.59 [116.6]	.799 [20.29]
10.00 [254.0]	12.58 [319.5]	12.71 [322.8]	12.48 [317.0]	11.88 [301.8]	10.90 [276.9]	9.72 [246.9]	8.54 [216.9]	7.35 [186.7]	6.17 [156.7]	4.99 [126.7]	.820 [20.83]
14.00 [355.6]	15.69 [398.5]	15.59 [396.0]	15.12 [384.0]	14.26 [362.2]	13.01 [330.5]	11.49 [291.8]	9.97 [253.2]	8.45 [214.6]	6.92 [175.8]	5.40 [137.2]	.837 [21.26]
18.00 [457.2]	18.90 [480.1]	18.57 [471.7]	17.86 [453.6]	16.77 [426.0]	15.25 [387.4]	13.38 [339.9]	11.50 [292.1]	9.61 [244.1]	7.72 [196.1]	5.84 [148.3]	.849 [21.56]
22.00 [558.8]	22.23 [564.6]	21.70 [551.2]	20.78 [527.8]	19.45 [494.0]	17.68 [449.1]	15.46 [392.7]	13.17 [334.5]	10.88 [276.4]	8.59 [218.2]	6.30 [160.0]	.856 [21.74]
26.00 [660.4]	25.75 [654.1]	25.03 [635.8]	23.91 [607.3]	22.37 [568.2]	20.34 [516.6]	17.78 [451.6]	15.04 [382.0]	12.30 [312.4]	9.56 [242.8]	6.82 [173.2]	.858 [21.79]
30.00 [762.0]	29.52 [749.8]	28.63 [727.2]	27.33 [694.2]	25.58 [649.7]	23.33 [592.6]	20.47 [519.9]	17.20 [436.9]	13.94 [354.1]	10.67 [271.0]	7.40 [188.0]	.854 [21.69]
34.00 [863.6]	33.61 [853.7]	32.57 [827.3]	31.12 [790.4]	29.20 [741.7]	26.74 [679.2]	23.61 [599.7]	19.80 [502.9]	15.90 [403.9]	11.99 [304.5]	8.09 [205.5]	.843 [21.41]
38.00 [965.2]	38.00 [965.2]	36.97 [939.0]	35.39 [898.9]	33.32 [846.3]	30.69 [779.5]	27.35 [694.7]	23.07 [586.0]	18.36 [466.3]	13.66 [347.0]	8.95 [227.3]	.824 [20.93]

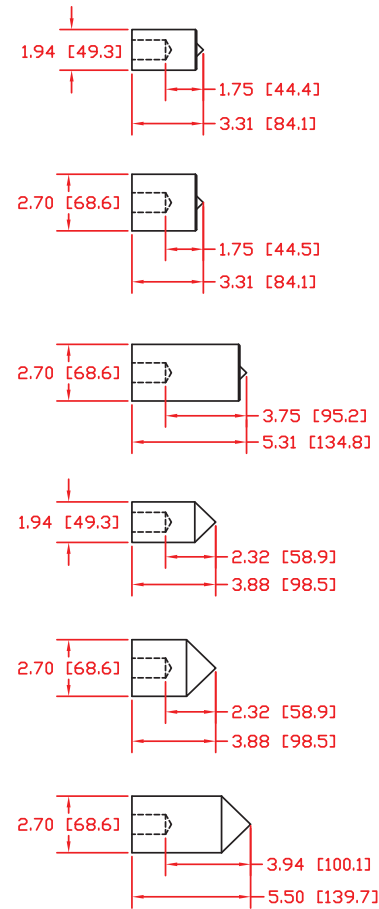
ITEM NO.	QTY.	PART NO.	DESCRIPTION	NOTES
<input type="checkbox"/> FLATNESS <input type="checkbox"/> STRAIGHTNESS <input type="checkbox"/> ANGULARITY <input type="checkbox"/> PERPENDICULARITY <input type="checkbox"/> PARALLELISM <input type="checkbox"/> CIRCULARITY <input type="checkbox"/> PROFILE OF SURF. <input type="checkbox"/> FREE-STATE <input type="checkbox"/> THE POSITION				
MATERIAL: _____ DRAWN: AE/TSS SCALE: _____ CHECKED: EIMAY91 DIMENSIONS ARE IN INCHES, DIMENSIONS AND UNITS IN 1/2 INCH IN RELATIONS UNLESS OTHERWISE NOTED. ALL DIMENSIONS UNLESS OTHERWISE SPECIFIED ARE TO BE TAKEN FROM THE CENTER OF GRAVITY UNLESS OTHERWISE SPECIFIED. CONFIDENTIAL - PROPERTY OF POSI LOCK PULLER, INC. Folsom, CA 95630				
PART NAME: MODEL PHB116/216 LONG JAWS			PART NO: 001936	REV: _____ SHEET 1 OF 3

PHB-116/216 Long Jaws HYDRAULIC PULLER

Page 2 of 3



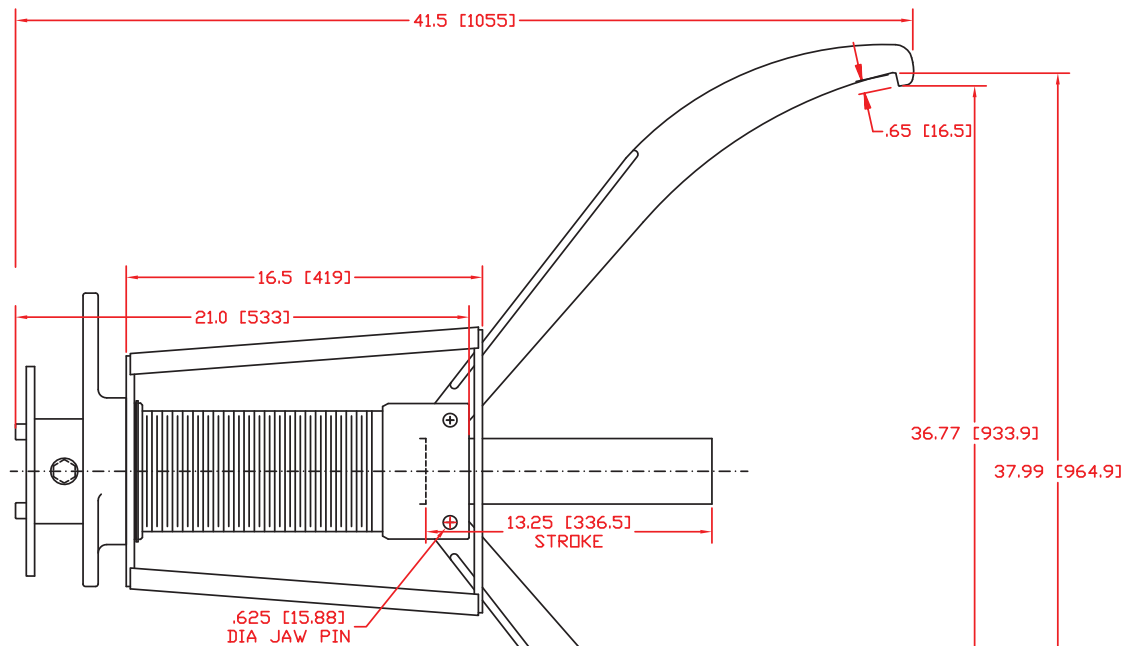
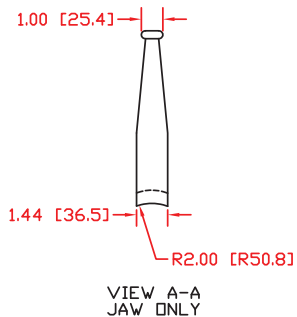
RAM POINT SET



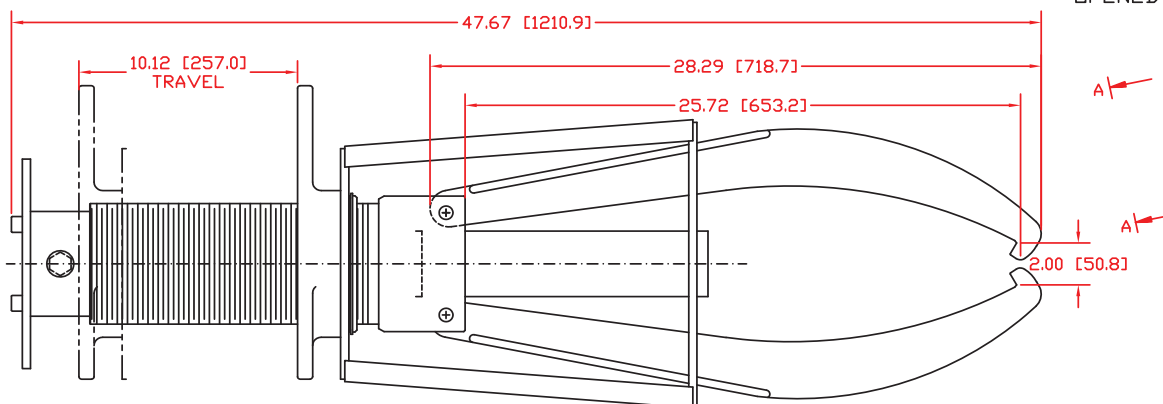
ITEM NO.	QTY.	PART NO.	DESCRIPTION	NOTES
<ul style="list-style-type: none"> <input checked="" type="checkbox"/> FLATNESS <input checked="" type="checkbox"/> STRAIGHTNESS <input checked="" type="checkbox"/> ANGULARITY <input checked="" type="checkbox"/> PERPENDICULARITY <input checked="" type="checkbox"/> PARALLELISM <input checked="" type="checkbox"/> ROUNDNESS <input checked="" type="checkbox"/> CIRCULARITY <input checked="" type="checkbox"/> PROFILE OF SURF. <input checked="" type="checkbox"/> HOLE POSITION <input checked="" type="checkbox"/> HOLE SIZE <input checked="" type="checkbox"/> CONCENTRICITY <input checked="" type="checkbox"/> SLOTTED <input checked="" type="checkbox"/> TAPER POSITION <input checked="" type="checkbox"/> CHAMFER <input checked="" type="checkbox"/> PARTIAL SIZE 				
		MATERIAL:		DRAWN: AE/TSB
		SCALE:		CHECKED: EIMAY91
DIMENSIONS ARE IN INCHES UNLESS OTHERWISE NOTED.				
IN 1/4 INCH IN MULTIPLE UNLESS OTHERWISE NOTED.				
ALL DIMENSIONS UNLESS OTHERWISE NOTED.				
ALL DIMENSIONS UNLESS OTHERWISE NOTED.				
 PQS LOCK PULLER, INC. Box 666, Cooper Station, NY 10005				
		PART NAME:		PART NO.
		MODEL PHB116/216		001936
		LONG JAWS		REV. 0
			SHEET	2 OF 3

PHB-116/216 Long Jaws HYDRAULIC PULLER

Page 3 of 3



OPENED



CLOSED

ITEM NO.	QTY.	PART NO.	DESCRIPTION	NOTES
<ul style="list-style-type: none"> <input type="checkbox"/> FLATNESS <input type="checkbox"/> STRAIGHTNESS <input type="checkbox"/> ANGULARITY <input type="checkbox"/> PERPENDICULARITY <input type="checkbox"/> PARALLELISM <input type="checkbox"/> ROUNDNESS <input type="checkbox"/> CIRCULARITY <input type="checkbox"/> PROFILE OF SURF. <input type="checkbox"/> SLOPE <input type="checkbox"/> CONCENTRICITY <input type="checkbox"/> SYMMETRY <input type="checkbox"/> TRUE POSITION <input type="checkbox"/> FREE-STATE 				
MATERIAL:		DRAWN:	AE/T/SB	21MAY91
SCALE:		CHECKED:		
DIMENSIONS ARE IN INCHES, DIMENSIONS AND UNITS IN 1:1 ARE IN MILLIMETERS UNLESS OTHERWISE NOTED. ALL DIMENSIONS UNLESS OTHERWISE SPECIFIED SHALL BE TO THE NEAREST 0.001 INCH (0.0254 MM)				
CONFIDENTIAL - PROPERTY OF POST LOCK PULLER, INC. Box 846, Cooperstown, NY 12525				
PART NAME:		PART NO.	REV.	
MODEL PHB116/216		001936		
LONG JAWS		SHEET	3 OF 3	D